



**1. Welcome**

BITWO's Gas Detector has been designed and tested to detect high concentrations of explosive gases. Built specifically for commercial and residential use. As the owner of a gas detector, there are some basic data that you should know for your own protection. Read this booklet to know about the operation of your new detector. For more information about hazardous gases please be sure to check [bitwoelectronics.com](http://bitwoelectronics.com)

**Important Warning Statements**

**CAUTION:** This Detector will only indicate the presence of gases in the sensor. Gas may be present in other areas. Replace this unit when end-of-life warning is on (see chapter 5). You might smell gas before the concentration is enough to activate the alarm.

**2. Technical Specifications**

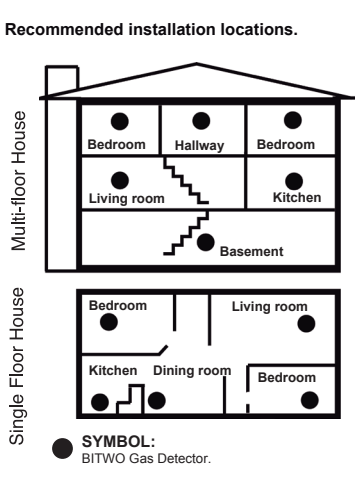
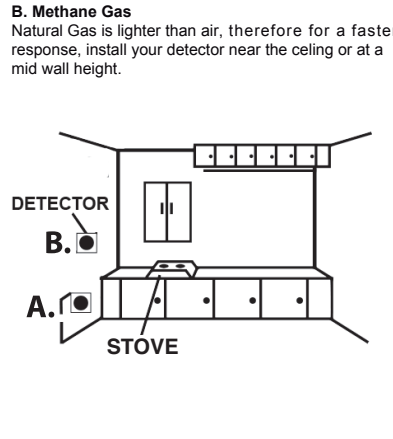
Temperature: 14°F - 122°F  
 Humidity: 10 - 95% RH  
 Acoustic Alarm: 90 dB at 10 ft.  
 Response Time: 5-10 min at 3ft  
 Input Voltage: 85-265V~ 50/60Hz  
 Power: 25 mA max (3W)  
 Life span: 7 years.

**3. Installation instructions**

1- Choose the type of gas you want to detect from the list provided: (See figure)

**A. Propane Gas**

This gas is heavier than air, therefore, for a faster response install your detector at ground level.



**Locations to Avoid. IMPORTANT:**

- Do not obstruct detector openings. Do not install the Detector where furniture curtains or other objects block the flow of air to the vents.
- Do not install the detector in water vapor areas such as showers and bathrooms.
- Do not spray deodorants, perfumes repellents or aerosols near the detector (they contain propane gas and can cause false alarm).
- The detector can be activated by ethanol vapors of products than contain alcohol.
- Do not install very close to stove (3 feet min).

**4. Weekly test**

It is important to test this unit every week pressing the "TEST" button for 2 sec. The detector will do a test function (see table chapter 5). To do a test run, you can release gas into de vents with a lighter and set off the alarm.

**ATTENTION**  
 During test run with a lighter, ONLY release gas, DO NOT activate the flame.

**5. Operating Characteristics**

LED indicator	Unit Status	Alarm Sound	Recommendation
Green LED flashes	Start-Up Calibration (60 seconds calibration)	Two beeps when calibration starts, one beep when calibration ends.	Place unit in fresh air while sensor preheat.
Green LED "On"	Normal Operation (sensing gas)	None	None
All LEDs flash 4 times	TEST Button long press (2 seconds) at normal operation	4 quick beeps and 3 second silence repeated once.	None
Red LED flashes	ALARM (unit has detected gas)	1/2 second beep, 1/2 second silence repeating.	Refer to "chapter 6. what to do when alarm sounds" on user guide.
Yellow LED "On"	Unit Malfunction	One beep every 30 seconds.	Replace unit immediately. Unit will not respond to gas.
Blue LED "On"	End of Unit Life	Two beeps every 30 seconds.	Replace unit immediately. Unit will not respond to gas.

**6. What to do when alarm sounds**

During an alarm, you will hear a 1/2 sec. beep and a 1/2 sec. silence pattern, repeated and loud, the red LED will flash in the same way.

**If the alarm sounds:**

- Call emergency services (911).
- Open doors and windows.
- Turn off every gas appliance and flame.
- Do not plug or unplug any electrical device including this detector.
- Close the gas supply at the main gas valve.
- Move immediately to fresh air.
- Do not use the telephone in the building where there might be a gas leak.

**WARNING!**  
 If you hear the alarm and you're not testing it, it means that the detector is warning you of a potentially dangerous situation that requires your immediate attention. Never ignore the alarm, ignoring the alarm in an emergency situation could result in serious injury or death.

**7. Detector Limitations**

**Gas detectors are not infallible.** All electronic devices use components that can wear out or fail at any time. Unit must be tested weekly (see chapter 4). Detectors cannot prevent or put out fires, they do not replace property or life insurance.

**8. Date Record**

Record the start date of operation of your Detector and end-of-life date, 10 years after registration.

Keep this user guide and check when it is time to change your BITWO detector.

start of operation: m \_\_\_ d \_\_\_ y \_\_\_

end of operation: m \_\_\_ d \_\_\_ y \_\_\_

**SATISFACTION GUARANTEED**

Product	Model	Distribuidor	Purchase Date
Client	Address	Telephone	E-mail

**LIMITED WARRANTY**

The BITWO A1 Combustible Gas Detector is warranted to be free from defective material and workmanship for a period of two (2) year from the date of manufacture (stamped on the unit). If any component becomes defective during the warranty period, it will be replaced or repaired free of charge, if the unit is returned in accordance with the instructions below. This warranty does not apply to units that have been altered or had repair attempted, or that have been subjected to abuse, accidental or otherwise. The above warranty is in lieu of all other express warranties, obligations or liabilities.

THE IMPLIED WARRANTIES OF MERCHANTABILITY AND FITNESS FOR PARTICULAR PURPOSE ARE LIMITED TO A PERIOD OF TWO (2) YEAR BITWO shall not be liable for any incidental or consequential damages for breach of this or any other warranty express or implied arising out of or related to the use of said equipment. Manufacturer or its agent's liability shall be limited to replacement or repair as set forth above. Buyer's sole and exclusive remedies are return of the goods and repayment of the price, or repair and replacement of non-conforming goods or parts.

Manufactured by BITWO Electronics.  
 84 Pedro Luis Ogazon, CDMX  
 Email: [info@bitwoelectronics.com](mailto:info@bitwoelectronics.com)  
 2022. All rights reserved.

Your detector has a problem? We'll fix it for free.  
[www.bitwoelectronics.com/doctorbitwo](http://www.bitwoelectronics.com/doctorbitwo)

**9. Button functions**

**TEST**

Press the button for 2 seconds until the detector performs the TEST function. You will hear the alarm sound and all of the LEDs will flash 4 times. (See table on chapter 5).

**SILENCE**

Press the button once while the alarm is on: This will mute the alarm for 1 minute. To unmute the alarm press the button again. The alarm will activate automatically after 1 minute if there's still presence of gas.

Thanks for choosing BITWO!

**NIGHT MODE**

If you plug your gas detector in your room or in a place where the green LED light might be annoying at night. Don't worry! Just click the button and the detector will enter night mode, the light intensity will drop 80%.

If you don't like to read... iWe draw this comic for you!

**1 Connect your Detector, you'll hear 2 beeps.**

**2 Wait just 1 minute for it to calibrate.**

2 Beeps when connected. Green LED will flash for a minute. Steady Green LED = Ready!

**iiALARM!!**

When gas level is dangerous, the audible alert will activate.

**Warning**

If the alarm sounds:

- Call emergency services (911).
- Open doors and windows.
- Move immediately to fresh air.

**Special Functions**

**Fault**

Yellow LED will flash when the detector has a malfunction.

**End-Of-Life**

Blue LED will flash after 7 years of use to indicate end-of-life.

**Where to Install**

- In every bedroom.
- In the kitchen.
- Near a gas source.

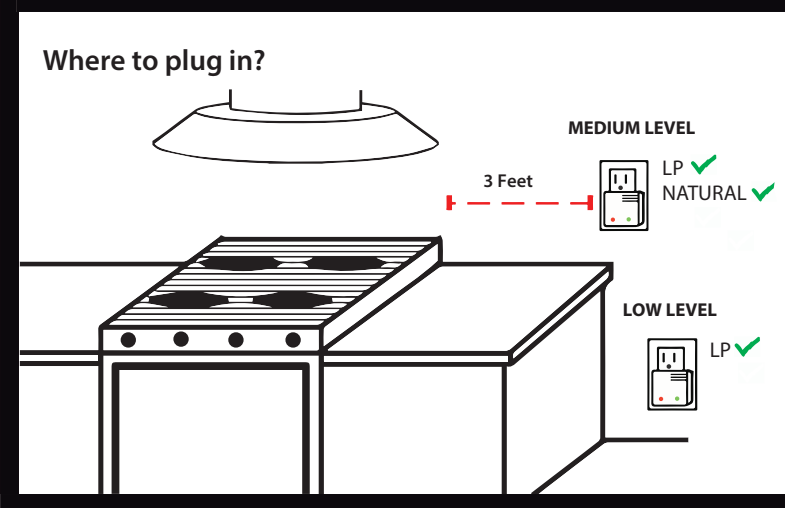
**Note:** Prevent your detector from getting dirty or wet. Use vacuum cleaner to clean detector.

for FAQ's just type: [bitwoelectronics.com](http://bitwoelectronics.com)  
 2022 Bitwo Electronics  
 All rights reserved.

**Where NOT to install**

- Places with high humidity:
  - Showers
  - Steam
  - Cleaning room
- Behind curtains or furniture that obstruct the air flow.
- Very close to the stove or oven (3 feet min).

**Note:** Do not spray deodorants, perfumes repellents or aerosols near the Detector (They contain propane gas or alcohol and can cause a false alarm).



**NIGHT MODE**

Sometimes the light emitted by certain devices is annoying at bedtime...

With your BITWO Detector This is not a problem at all!

Just "click" the side button and your Detector will enter "Night Mode"

The green LED light intensity will drop by 80%.

**TESTS**

**1 Disconnect and Connect**

**Note:** In case of false alarm disconnect and reconnect or press the "Silence" button.

**2 Test with real gas**

Release gas when the green LED is steady.

**3 Test with the button.**

Press the button for 2 seconds.

The alarm will sound and all LEDs will flash simultaneously on 4 pulses and a pause.

**Silence Button**

Press the button while the alarm is on to silence it for 1 min. while you identify the danger. Then the alarm will reactivate itself.

**Never ignore the alarm!**